

# CR-35 BIO

## HIGH-SENSITIVITY IMAGE PLATE SCANNER

COMPACT HIGH-SPEED SCANNER FOR ALL FLEXIBLE  
TYPES OF IMAGE PLATES / STORAGE PHOSPHOR  
SCREENS UP TO 35 X 50 CM

- EASY TO USE
- 30  $\mu\text{M}$  RESOLUTION
- HIGH SCANNING SPEED
- INTEGRATED ERASING UNIT
- WHOLE-BODY RADIO-LUMINOGRAPHY



CR-35 Bio is a compact, high-speed scanner for all flexible types of image plates / storage phosphor screens up to the size of 35x50cm. In combination with the corresponding image plate, it can be used for a variety of different nuclides, such as  $^3\text{H}$ ,  $^{11}\text{C}$ ,  $^{14}\text{C}$ ,  $^{18}\text{F}$ ,  $^{32}\text{P}$ ,  $^{33}\text{P}$ ,  $^{35}\text{S}$ ,  $^{59}\text{Fe}$ ,  $^{68}\text{Ga}$ ,  $^{99\text{m}}\text{Tc}$ ,  $^{111}\text{In}$ ,  $^{125}\text{I}$ ,  $^{131}\text{I}$ ,  $^{137}\text{Cs}$  etc.

Its novel design allows compact size and high speed scanning. The laser is focusable up to 30 µm. An integrated erasing unit allows to read and erase the imaging plate in one step. The CR-35 Bio scanner is the first imaging system for radio-lumino-graphy certified by BAM, Berlin, for the tests according to DIN EN 14784, class B.

Additional features are:

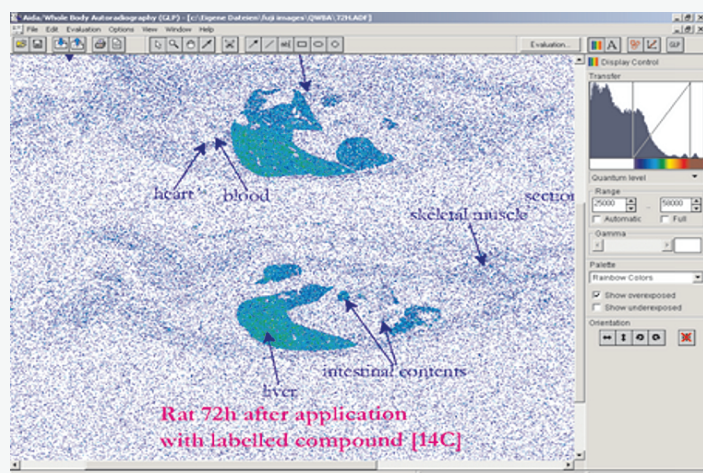
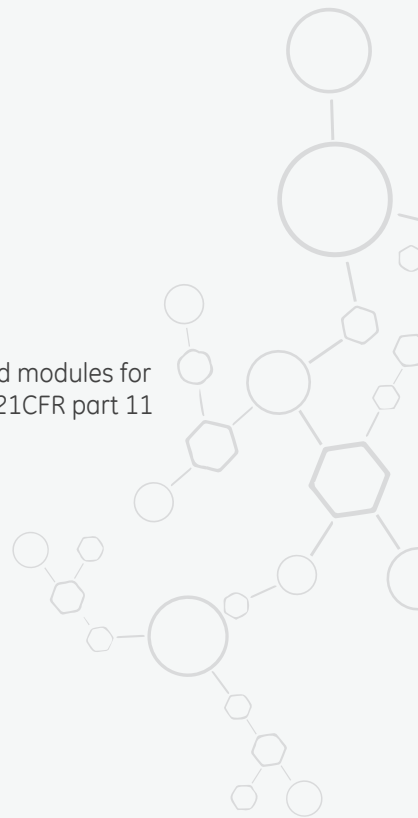
- Easy to use
- 16-bit dynamic range
- Red LED laser 635 nm focused to 30 µm
- Low operating noise

**Technical specifications**

Laser	Red LED laser 635 nm, focused to 30 µm
Pixel size	30 – 50 - 100 µm
Max. size for screens	W35 cm x L43 cm or longer
Interface	LAN cable
Operating noise	<49 db (A)
Optional eraser	For high-throughput and / or highly radioactive samples
Data analysis	AIDA (network and standalone); state of the art data analysis; optimized modules for TLC analysis, gels and blots; whole body autoradiography; GLP / GMP, 21CFR part 11

**Physical specifications**

Dimensions	W390 x D380 x H520 mm (W15,35" x D14,96" x H20,47")
Weight	max. 21 kg (46,3 lbs)



Quantitative whole body radio-lumino-graphy